



**\$1,000 Scholarships**



**Over \$2,500 since 1996 in annual Carlson Camper Scholarships for St Marks Kids**

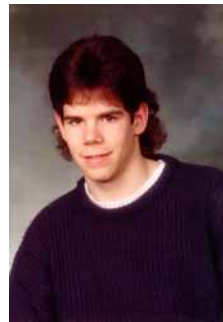


**\$275 Quilts and Hats for Kids**

# St. Michaels Endowment Fund



**\$900 Croatia Mission Trips**



**\$500 in Seminarian Support**

## Supporting the youth ministry mission of St. Marks



**\$300 for Slovakian Mission Trip**



**\$350 Support to Lutheran Camps**



**\$1,900 Youth Gatherings Support**



**\$3,100 in Youth Mission Trips to West Virginia, Michigan, & New Hampshire**

# Since 1998, over \$14,000 of St Marks Youth Endowment Fund Earnings Distributed in Support of Our Youth & Youth Programs

(First Year of Fund Distributions)

## Fund Distributions in 1998

|                               |         |                           |
|-------------------------------|---------|---------------------------|
| Youth Gathering               | \$1,000 | New Orleans               |
| ELCA Youth Ministry Network   | \$ 300  | Youth Leadership Training |
| Dallas National Youth Workers | \$ 200  | Youth Leadership Training |

## Fund Distributions in 1999

|                        |         |                               |
|------------------------|---------|-------------------------------|
| Lutheran Music Program | \$1,000 | Scholarship                   |
| Croatia Mission        | \$ 528  | Youth Mission Support         |
| Croatia Mission        | \$ 375  | Youth Sports Equipment        |
| Lutheran Summer Camps  | \$ 250  | Grants for St Marks Attendees |

## Fund Distributions in 2000

|                                      |       |                               |
|--------------------------------------|-------|-------------------------------|
| Youth Gathering                      | \$900 | Youth Mission                 |
| Lutheran Social Service Foster Child | \$600 | Youth Regionally              |
| Croatia Youth Mission                | \$390 | Youth Globally                |
| Lutheran Summer Camp Grants          | \$250 | Grants for St Marks Attendees |

## Fund Distribution in 2001

|                                     |          |                               |
|-------------------------------------|----------|-------------------------------|
| Roanoke College Scholarship         | \$1000   | Scholarship                   |
| Fairfax Social Service Foster Child | \$ 275   | Regional Youth                |
| Lutheran Summer Camp Grants         | \$ 280   | Grants for St Marks Attendees |
| Allocation for land purchase        | \$ 1,000 | Friendship House Purchase Spt |

## Fund Distribution in 2002

|  |       |                               |
|--|-------|-------------------------------|
| New Hampshire Mission Trip                   | \$900 | Youth in Mission              |
| Supported World Vision Famine youth project  | \$500 | Global Youth                  |
| Purchased College Care Packs for 9 students  | \$100 | Local Youth                   |
| Lutheran Summer Camp Grants                  | \$150 | Grants for St Marks Attendees |
| Sponsored Presidential Classroom participant | \$500 | Scholarship                   |

## Fund Distribution in 2003

|                                       |       |                               |
|---------------------------------------|-------|-------------------------------|
| Lutheran Summer Camp Scholarships     | \$300 | Grants for St Marks Attendees |
| West Virginia Mission Trip            | \$500 | Youth in Mission              |
| Youth Leadership Training Scholarship | \$250 | Scholarship                   |
| Seminary Scholarship                  | \$250 | Scholarship                   |
| World Vision Youth Project            | \$500 | Global Youth                  |

## Fund Distribution in 2004

|                                       |       |                                    |
|---------------------------------------|-------|------------------------------------|
| World Hunger Relief Challenge         | \$300 | Challenge Grant for St Marks Youth |
| Lutheran Summer Camp Scholarships     | \$300 | Grants for St Marks Attendees      |
| Mar-Lu Ridge Hurricane Recovery       | \$250 | Grant – Youth Mission              |
| Seminary Scholarship                  | \$250 | Scholarship                        |
| Goshen Scout Reservation Chaplain Svc | \$250 | Regional Youth                     |
| Hispanic Youth Ministry               | \$146 | Guitars                            |
| Michigan Mission Trip                 | \$700 | Youth in Mission                   |